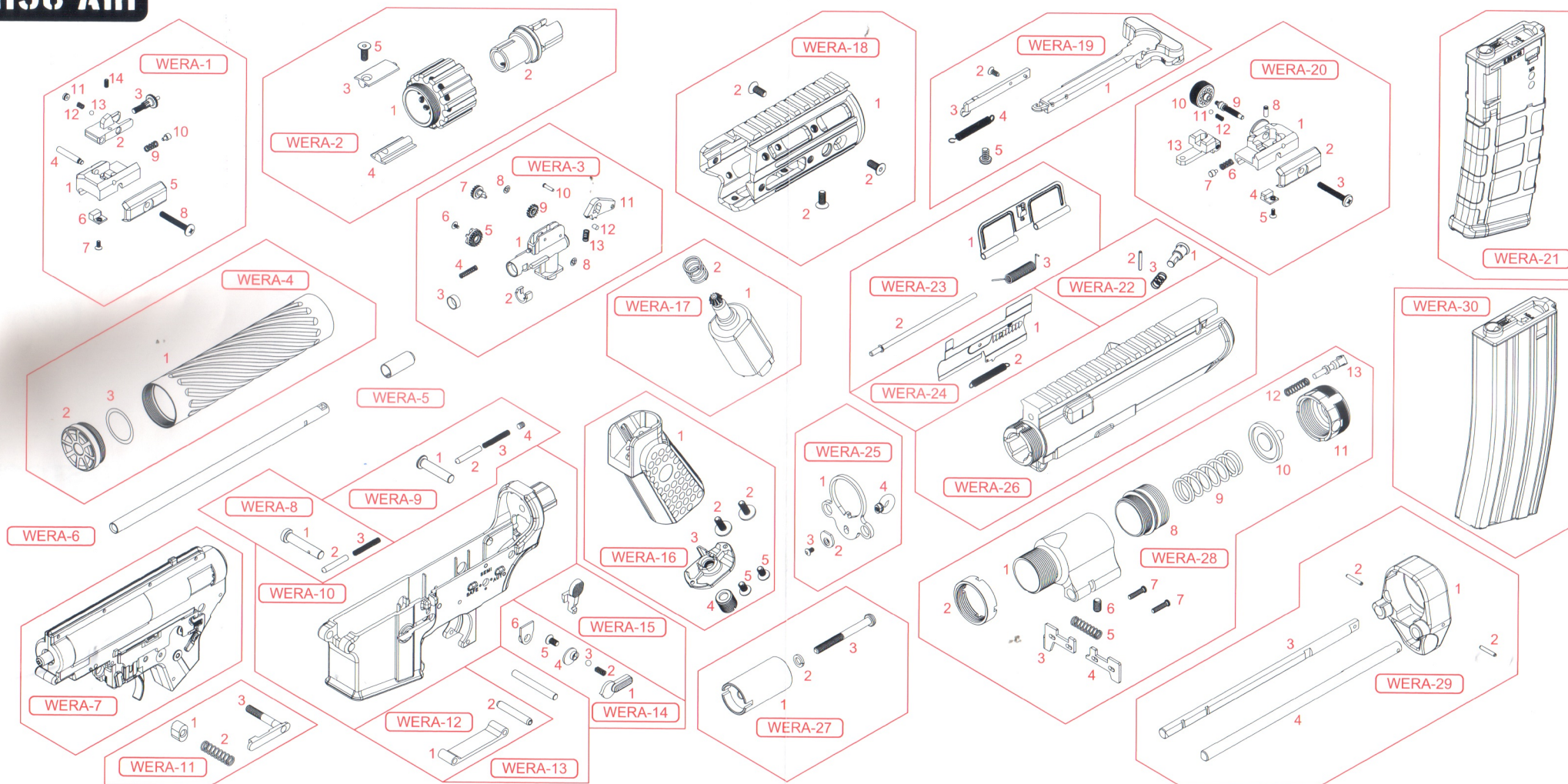


# 4. 分解圖、零件表

# PARTS LIST

## R5C-AIR



NO.	品名 Parts name
WERA-1	準星組 Front Sight Set
WERA-2	固定環組 Fixing Ring Set
WERA-3	上旋系統組 Hop-Up Set
WERA-4	減音管組 Suppressor Set
WERA-5	上旋系統橡皮 Hop-Up Rubber
WERA-6	內槍管 Inner Barrel
WERA-7	齒輪箱組 Gear Box Set
WERA-8	前插梢組 Front Pivot Pin Set

NO.	品名 Parts name
WERA-9	後插梢組 Rear Pivot Pin Set
WERA-10	下槍身 Lower Receiver
WERA-11	彈匣卡榫組 Magazine Catch Set
WERA-12	扳機護弓組 Trigger Guard Set
WERA-13	扳機插梢 Trigger Lock Pin
WERA-14	射擊選擇鈕組 Selector Lever Set
WERA-15	槍機卡榫 Bolt Catch
WERA-16	握把組 Pistol Grip Set

NO.	品名 Parts name
WERA-17	馬達組 Motor Set
WERA-18	護木組 Handguards Set
WERA-19	槍機拉柄組 Charging Handle Set
WERA-20	照門組 Rear Sight Set
WERA-21	300發塑膠彈匣 300rd Plastic Magazine
WERA-22	槍機助進器組 Forward Assist Knob Set
WERA-23	防塵蓋組 Ejection Port Cover Set
WERA-24	槍機飾片組 Dummy Bolt Set

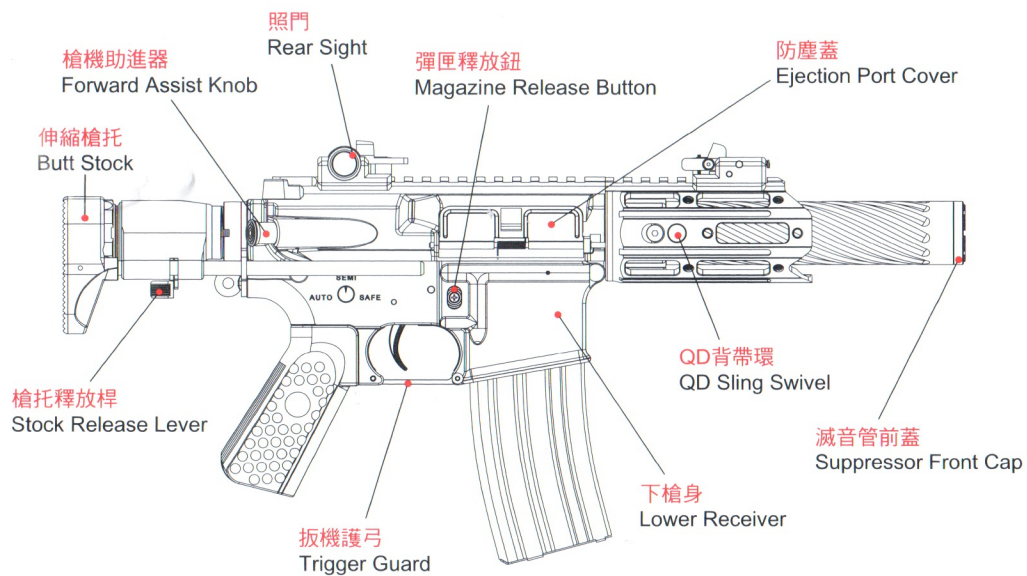
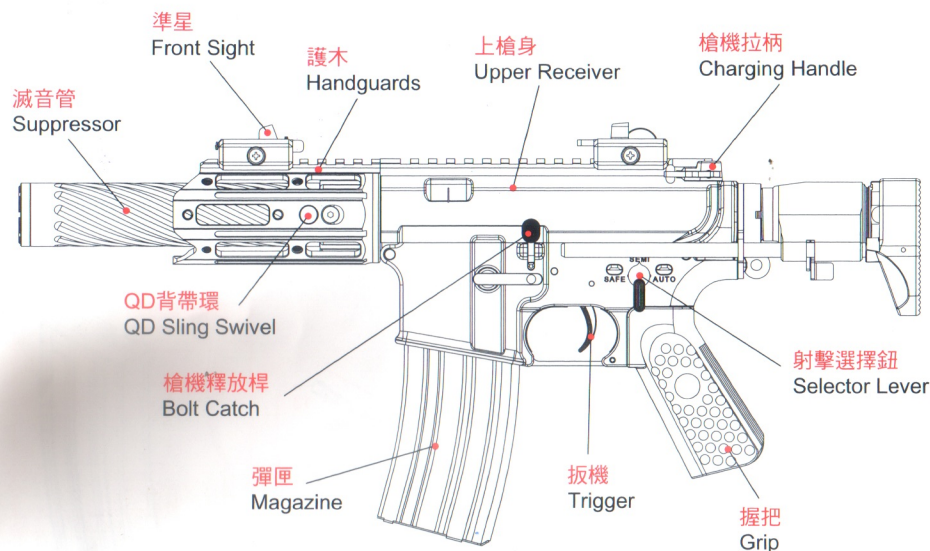
NO.	品名 Parts name
WERA-25	槍托連接蓋板組 Receiver End Plate Set
WERA-26	上槍身組 Upper Receiver Set
WERA-27	槍托內桿組 Stock Inner Tube Set
WERA-28	伸縮托桿組 Retractable Stock Tube Set
WERA-29	槍托底板組 Stock Bottom Plate Set
WERA-30	300發彈匣 300rd Magazine

本說明書的產品圖片僅供參考，出貨以實物為準。  
All photos here are for reference only. Specifications are subject to the physical product.

# 1. 各部名稱

# COMPONENT NAME

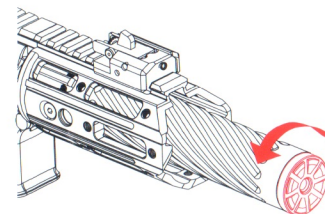
## R5C-AIR



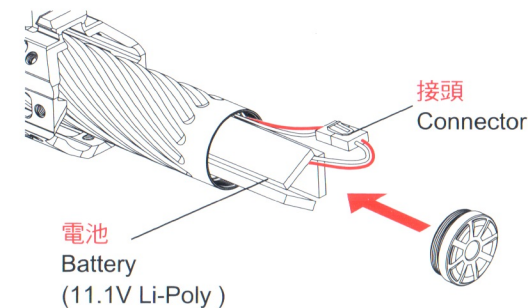
# 2. 電池的安裝

# SETTING BATTERY

1. 將滅音管前蓋轉開。  
CCW the suppressor front cap.



2. 將電池裝入滅音管裡並接上接頭，最後裝回鎖緊前蓋。  
Connect the battery into the suppressor and then lock the front cap.



# 3. 伸縮托操作

# PERATE THE TELESCOPING STOCK

調整槍托長度(3段可調)

Pressing the retractable button can adjust stock length. (3 levels adjustment)

